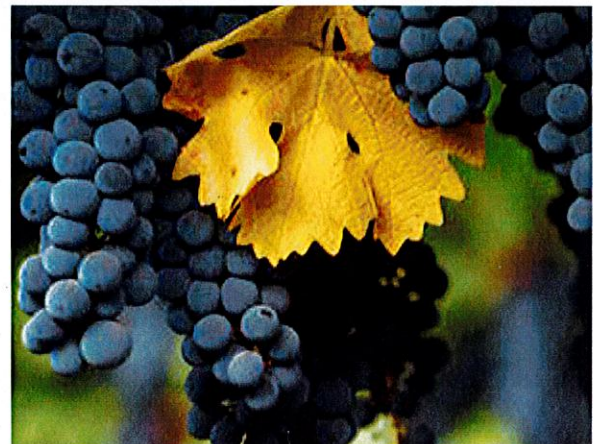
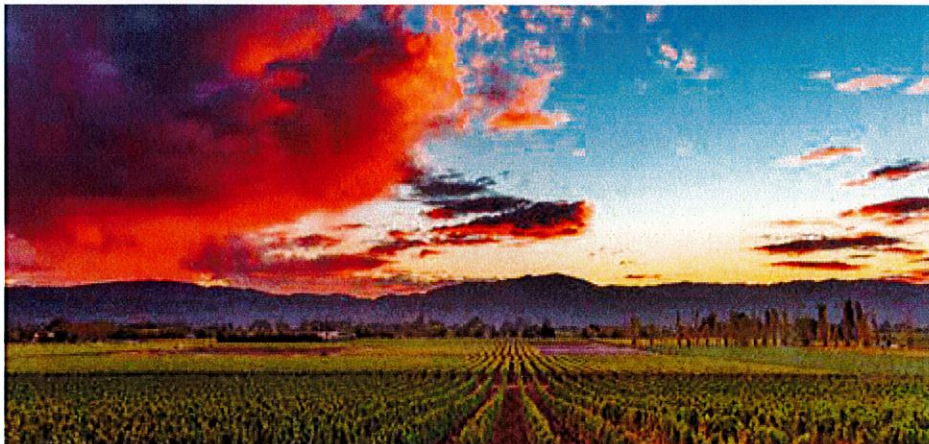




**CERRATO**

**PATINA**

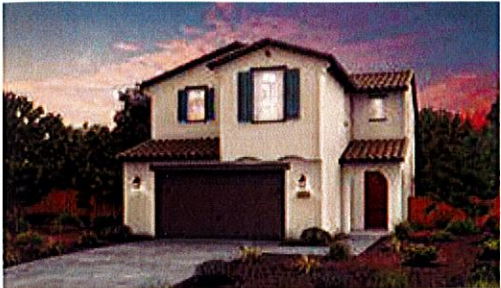




CERRATO

PATINA

APPROX. 2,133 SQ. FT. | TWO-STORY  
3 BEDROOMS PLUS LOFT | 2.5 BATHROOMS  
2-CAR GARAGE



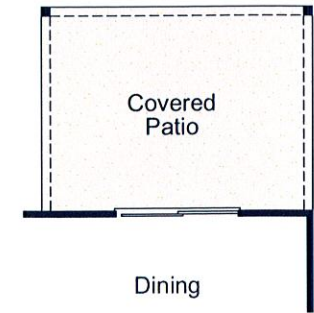
A



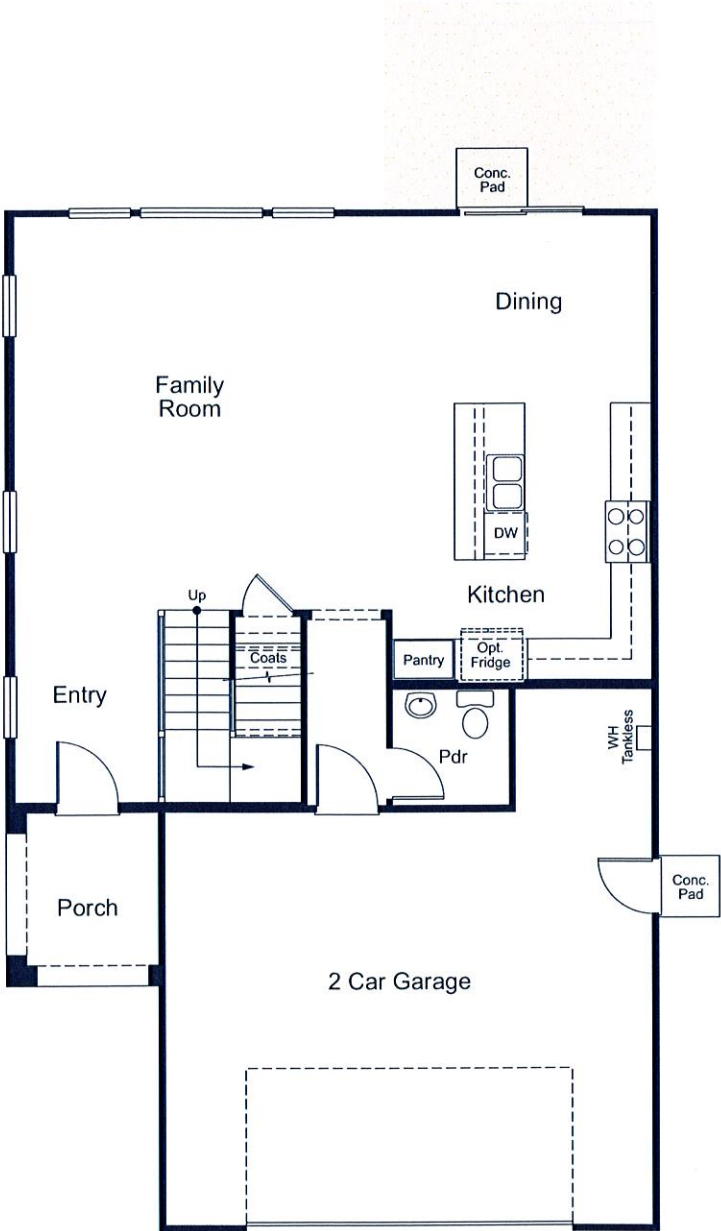
B



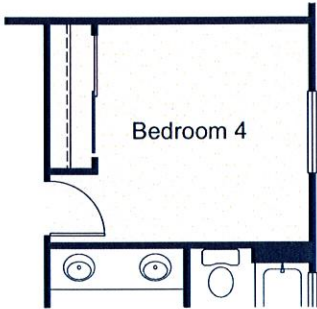
C



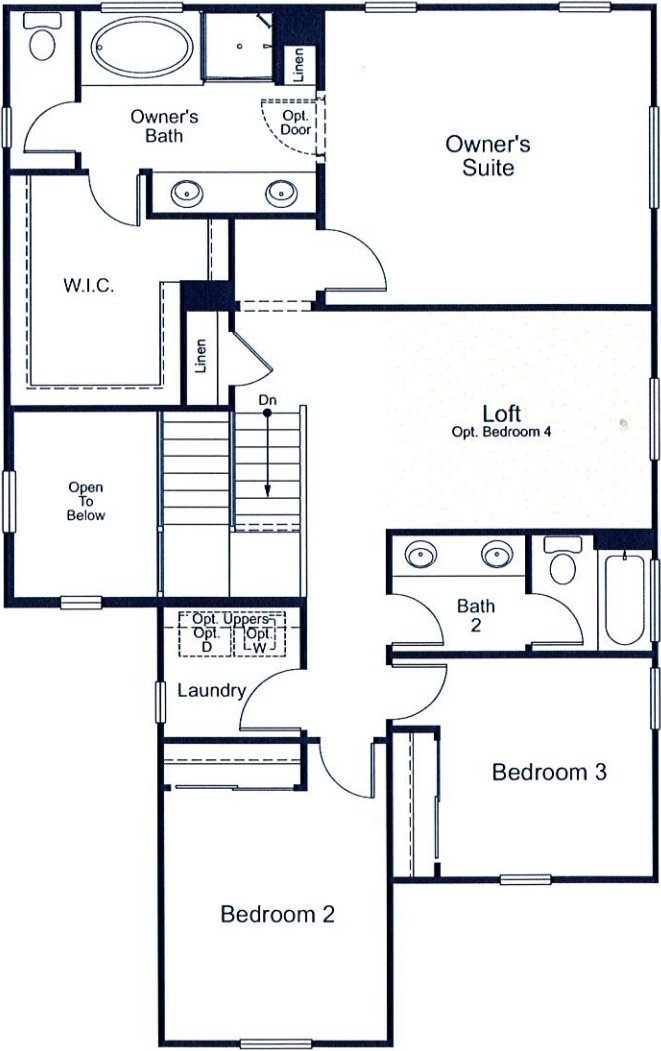
OPT. COVERED PATIO



FIRST FLOOR



OPT. BEDROOM 4 AT LOFT



SECOND FLOOR



Offered for sale by BMC Realty Advisors, Inc. CA Broker License #01920450. General Contractor License #971581. Seller reserves the right to make changes or modifications to plans, amenities, maps, plan specifications, materials, features, and colors without notice. Maps, plans, landscaping and elevation renderings are artist's conceptions, are not to scale, and may not accurately depict the homes or lots as they are built. These illustrations may depict options and features that are not standard on all models. Optional features may be included in the purchase, and if included, will vary according to size and location of the lot. Exterior treatments, square footages, window locations, and room configurations may vary with elevation. Model home interior decorating, options, landscaping, fencing, and other amenities are for display purposes only. All marketing material is for illustrative purposes only and not a part of a legal contract. Square footages are approximate. All prices, plans, standard features, specifications, options, availability and estimated delivery dates are subject to change without prior notice. Additional restrictions may apply. See a New Home Counselor for further details. Depictions of homes or other features are conceptual. Decorative items and other items shown may be decorator suggestions that are not included in the purchase price and availability may vary. Persons in photos do not reflect racial preference and housing is open to all without regard to race, color, religion, sex, handicap, familial status, or national origin. ©12/2017 Century Communities.



# CERRATO

## INCLUDED FEATURES

### DISTINGUISHED EXTERIORS

- Required solar 3kW - 6kW (lease or purchase)
- Detailed architectural styling with stucco and/or siding (per elevation)
- Architecturally selected exterior color palettes
- Spacious two-car garage (2 plans with 3-car tandem garages)
- Beautifully landscaped, drought tolerant front yards
- Fenced rear and side yards with access gates (single gate per lot)
- Covered front porches
- Optional covered back patios, integrated with the roofline with recessed lighting
- Designer coach LED lighting (elevation specific)
- Eagle® concrete tile roofing with limited lifetime warranty

### INVITING INTERIORS

- Spacious interiors with great rooms, dining rooms, and optional lofts, bedrooms and dens (per plan)
- 9' ceilings throughout
- Wood-trimmed window sills
- 5 1/4" baseboards throughout
- Paneled interior doors
- Polished chrome door hardware and fixtures throughout
- Energy efficient recessed LED lighting and designer-selected interior light fixtures
- Handset 17" x 17" ceramic tile flooring (select areas)

- Wall to wall Shaw® carpet and 7/16" - 6 pound pad (select areas)
- Interior laundry rooms with optional built-in cabinetry
- Pre-wired for ceiling fan light with light kit in the great room and owner suite

### GOURMET KITCHENS

- Stained maple cabinetry with European-style concealed hinges
- Granite slab countertop with 6" backsplash with 1-1/2" square edge and full-height at cooktop
- Extra deep, single-basin stainless steel kitchen sink
- Polished chrome Moen® faucet with pull down sprayer
- Whirlpool® appliance package:
  - Stainless steel dishwasher with concealed controls
  - Stainless steel 30" gas range and self-cleaning convection oven
  - Stainless steel built-in microwave hood combo
- Designer-selected handset 17" x 17" tile flooring
- Spacious islands with room for seating (per plan)
- USB charging port installed for everyday electronics

### OWNER'S SUITE

- Elegantly designed owner's suite with separate bathroom and spacious walk-in closet

- Dual vanities with solid surface E-Stone® countertops with 1-1/4" square edge and 6" backsplash
- Moen® polished chrome plumbing fixtures and faucets
- Solid surface E-Stone® shower surrounds and tub deck with 12" wainscot
- Separate water closet

### EASY CARE SECONDARY BATHS

- Polished chrome Moen® plumbing fixtures and faucets
- Spacious vanities with solid surface E-Stone® countertops with 1-1/4" square edge and 6" backsplash
- Fiberglass tub/showers with grout-less surrounds
- Designer-selected handset 17" x 17" tile flooring (select areas)

### QUALITY GREEN-BUILT ENERGY FEATURES

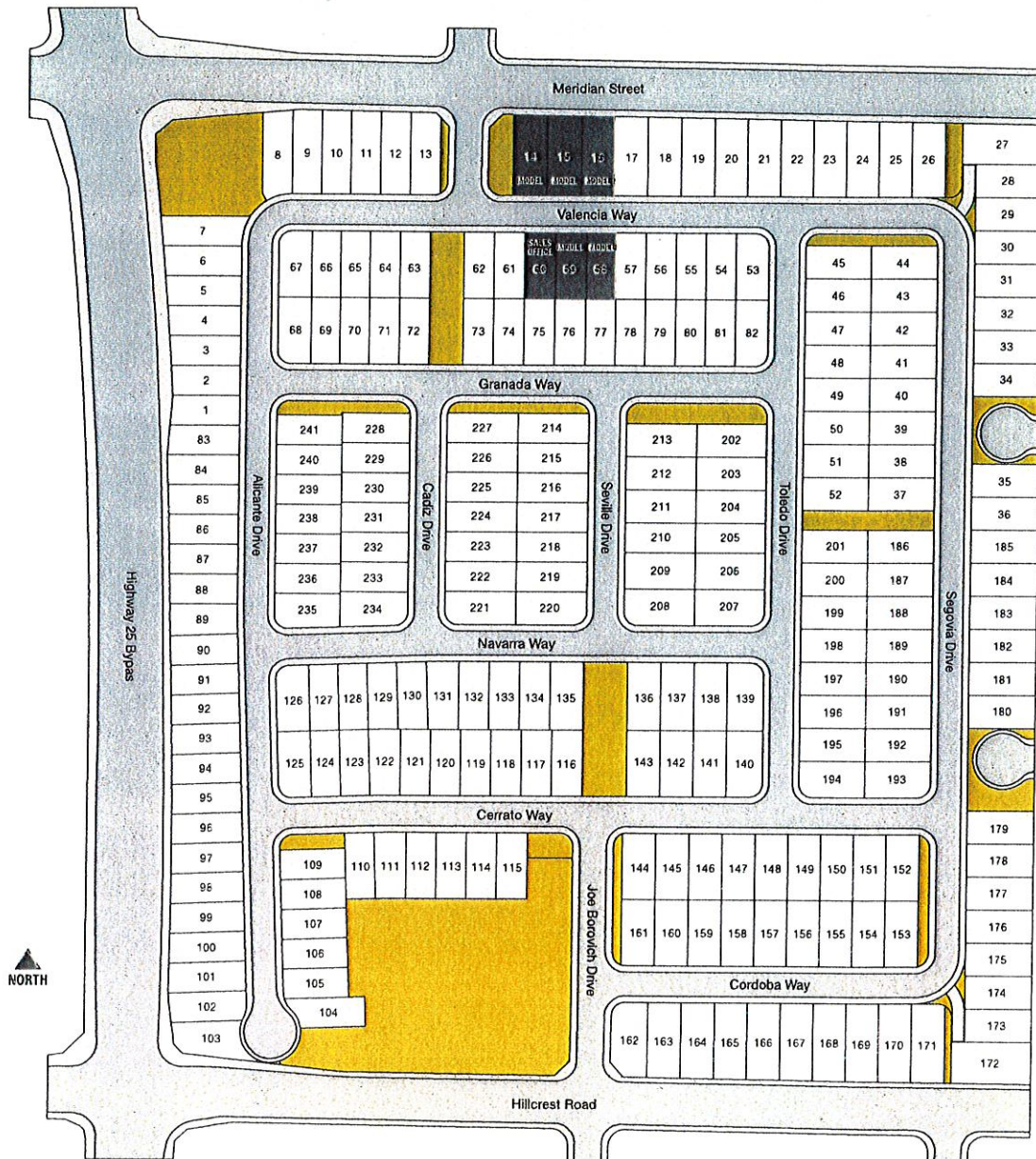
- Energy-efficient LOW-E dual-paned vinyl windows
- Energy-efficient home: R-13 wall system, R-38 ceiling - with special framing techniques for draft protection
- Fire sprinkler system
- Smoke detectors with battery backup and carbon monoxide detectors
- Energy Star® rated dishwasher
- Drip irrigation system
- R-6 duct system
- Tankless Rinnai® gas water heaters
- EV charger prep for future electric car





# CERRATO

# SITE PLAN



CenturyCommunities.com



**CENTURY**  
COMMUNITIES

831.313.0999



Offered for sale by BMC Realty Advisors, Inc. CA Broker License #01920450. General Contractor License #971581. Seller reserves the right to make changes or modifications to plans, amenities, maps, plan specifications, materials, features, and colors without notice. Maps, plans, landscaping and elevation renderings are artist's conceptions, are not to scale, and may not accurately depict the homes or lots as they are built. All marketing material is for illustrative purposes only and not a part of a legal contract. See a New Home Counselor for further details. ©07/2017 Century Communities.