

## RESIDENCE 3

2,011 sq. ft.  
4 Bedrooms | 2.5 Baths  
2-Car Garage

### OPTIONS

Covered Patio

Covered Patio  
w/ Fireplace

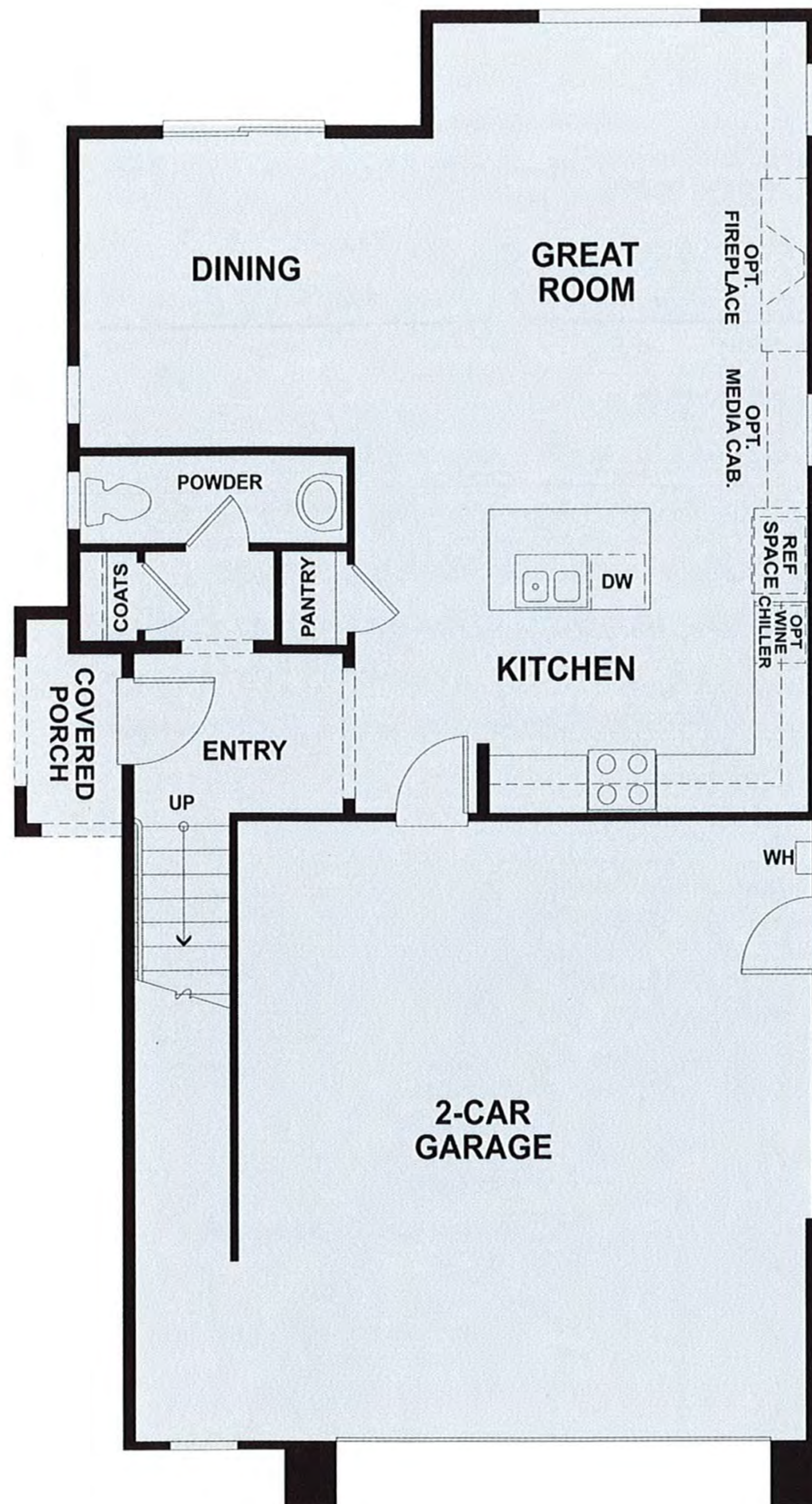
Loft in Lieu  
of Bedroom 4



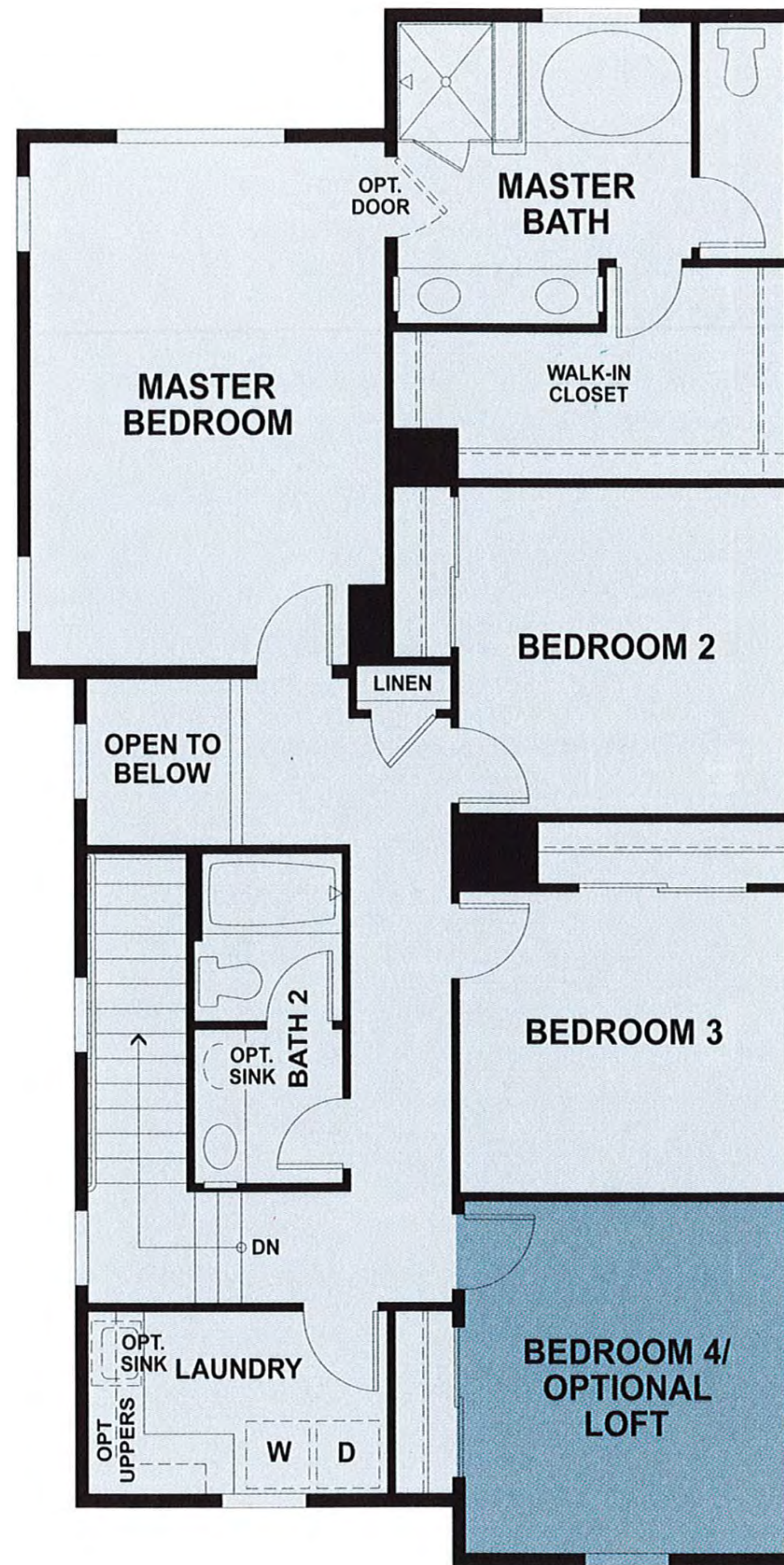
RENDERINGS AND FLOOR PLANS ARE ARTIST'S CONCEPTUAL DRAWINGS. SQUARE FOOTAGE AND ROOM DIMENSIONS ARE APPROXIMATE. WINDOW SIZES, SHAPES AND LOCATIONS VARY PER ELEVATION. DUE TO OUR ONGOING COMMITMENT TO QUALITY, FEATURES, FINISHES, FLOOR PLANS, INFORMATION, AND SPECIFICATIONS ARE SUBJECT TO CHANGE WITHOUT NOTICE.



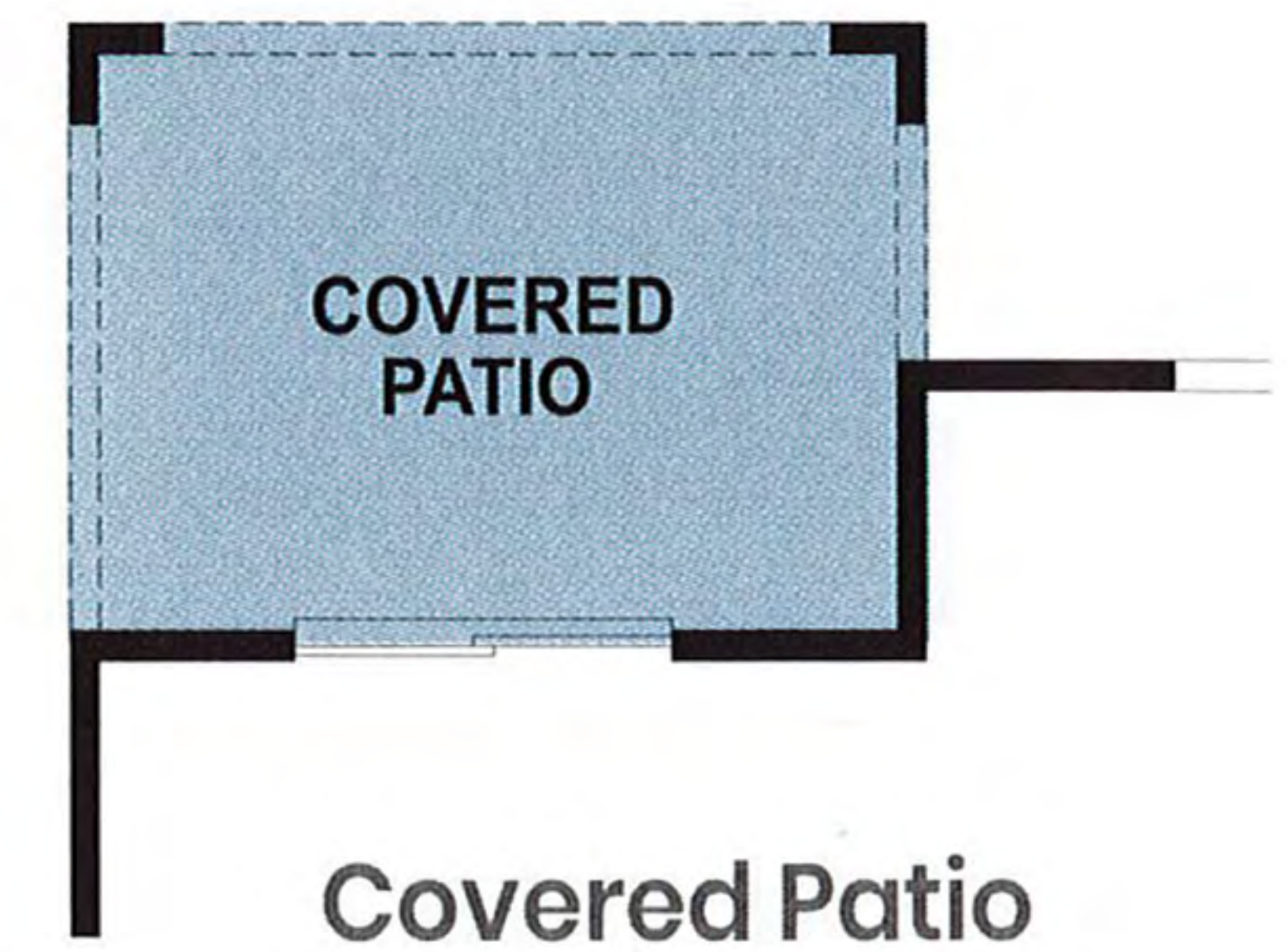
# RESIDENCE 3



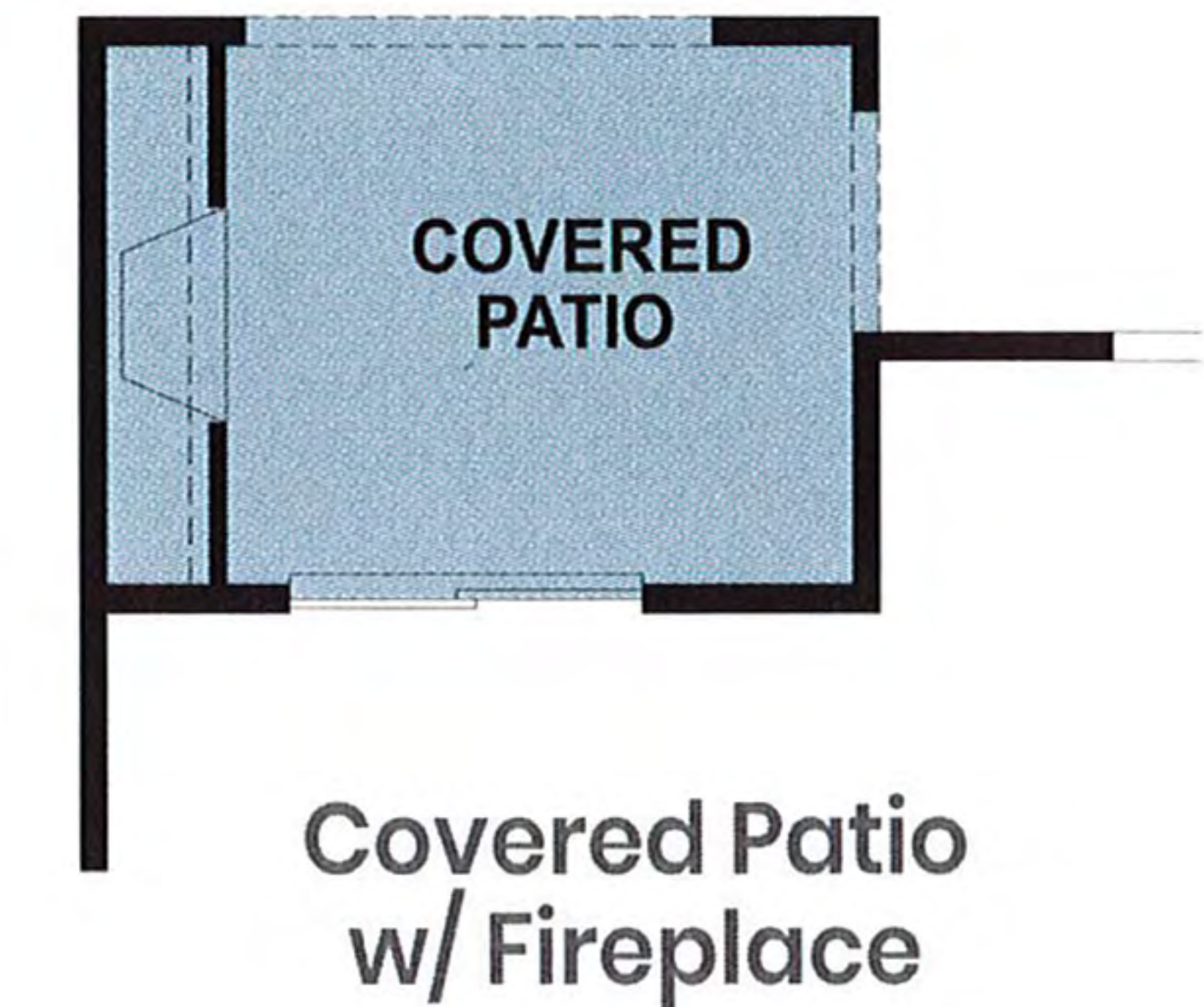
FIRST FLOOR



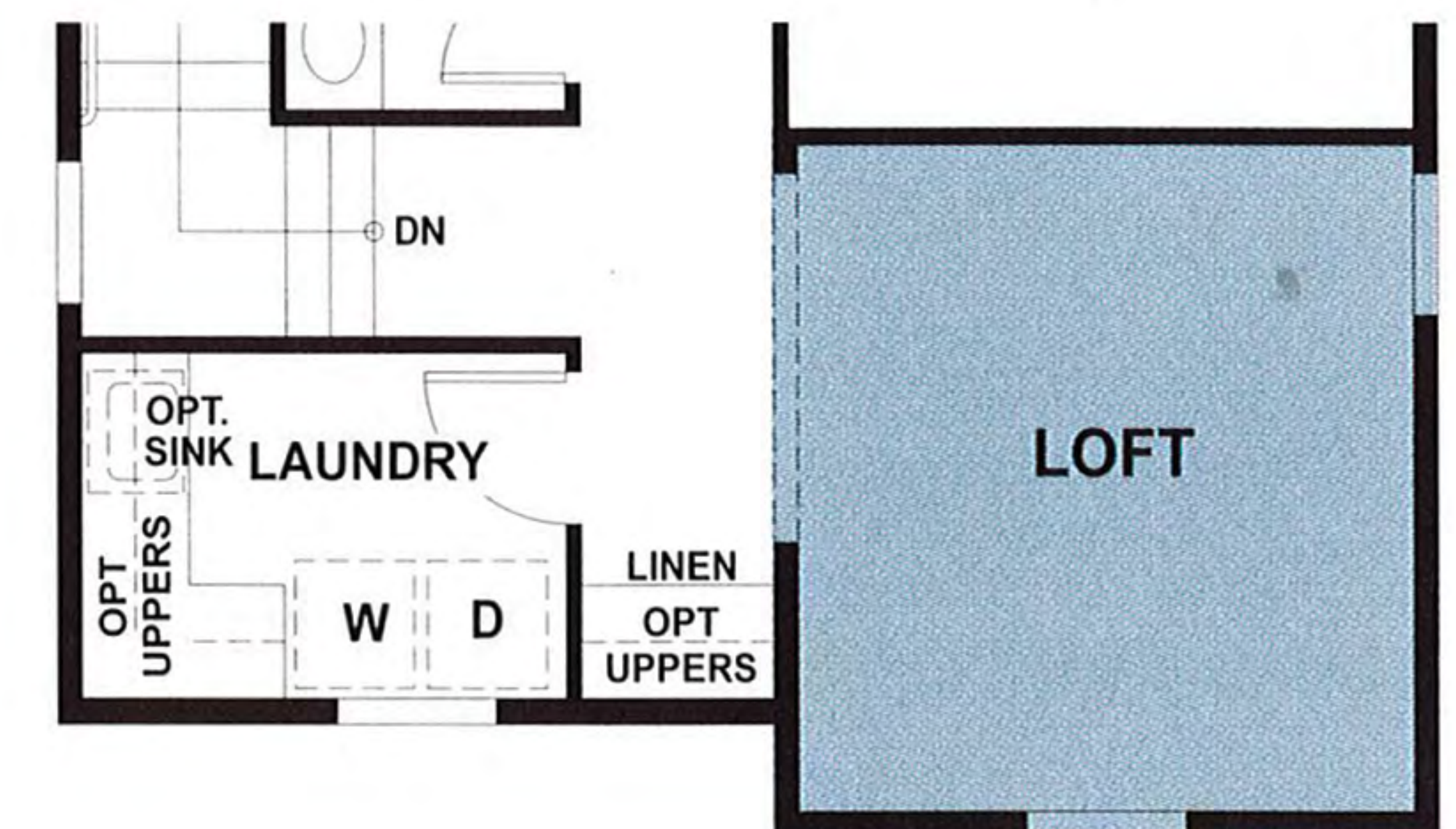
SECOND FLOOR



Covered Patio



Covered Patio  
w/ Fireplace



Loft in Lieu  
of Bedroom 4

OPTIONS



# FEATURES

## INCLUDED

### KITCHEN

- GE appliance package with 30" range, microwave and dishwasher in your choice of black or white
- Slab granite countertops with 6" splash with full height at range in three color choices
- Peerless single handle pullout faucet in chrome
- Birch cabinets in your choice of two colors with brush nickel pulls
- Amerisink stainless steel kitchen sink and Peerless pullout faucet

### BATHS

- Birch cabinets in your choice of two colors with brush nickel pulls
- Cultured marble in white with 4" splash with a rectangle integral bowl sink
- Elongated toilets in the master and powder baths
- Peerless chrome plumbing fixture packages

### SMART HOME FEATURES

- LED recessed can lights
- Interior low-VOC paint
- Tankless water heater
- Smart thermostat
- Dual zoned air conditioning

### EXTERIORS

- Concrete roof tile per elevation
- Exterior wall mounted fixtures in antique bronze

### INTERIORS

- Hand laid 12" x 12" ceramic tile at entry, kitchen, nook and all baths and laundry
- 3 1/4" base molding with eased edge
- Cat5 phone wiring to bedrooms and kitchen
- RG6 wiring to family room and bedrooms
- Wayne Dalton garage doors with opener

## AVAILABLE OPTIONS

### CABINETRY

- Rich finish door style and hardware selections
- Built-in cabinetry

### COUNTERTOPS

- Selections of natural granite slab or quartz countertops at kitchen with decorative edge choices
- Natural stone or quartz available at bath and laundry

### APPLIANCES

- Upgrade GE appliances packages
- GE refrigerator options
- GE washer and dryers

### ELECTRICAL

- Security, audio and home automation systems
- Upgraded lighting packages available
- Ceiling fan

### FINISH TRIM

- Optional gas fireplace at great room
- Upgraded 5 1/4" base board
- Interior two-tone paint upgraded colors
- Closet organizers
- Framed mirror sections at all bathrooms

### PLUMBING

- Selection of Delta plumbing fixture packages



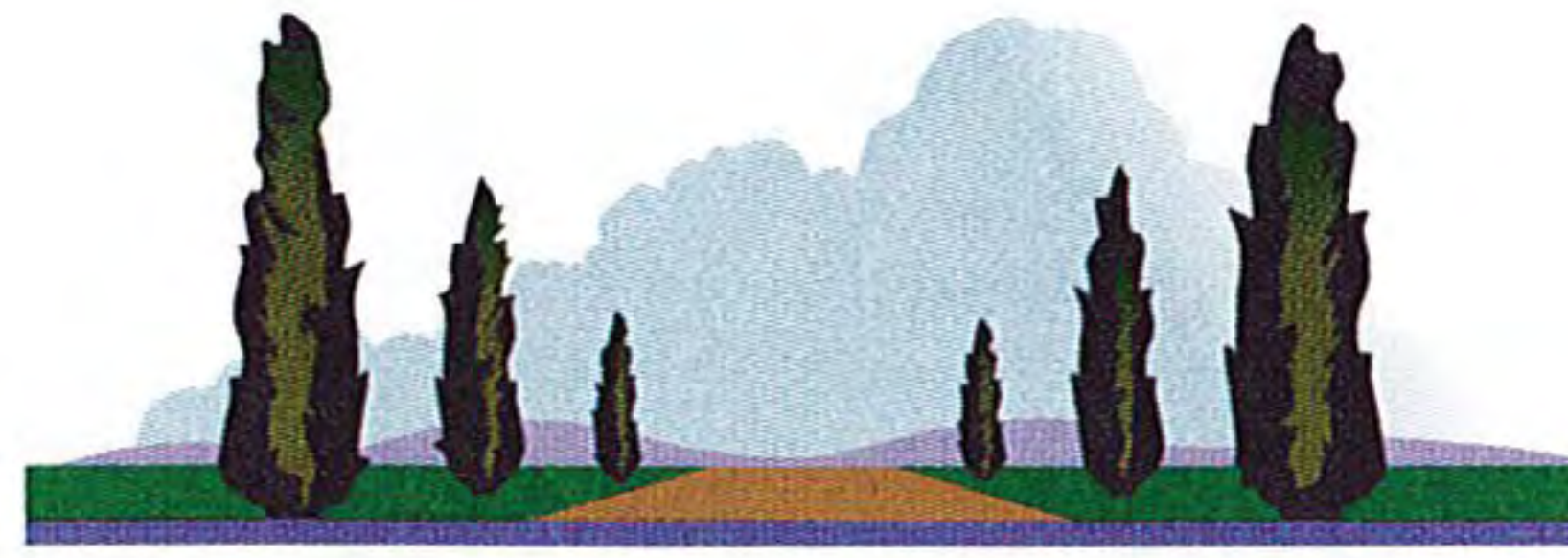
# SITE MAP | ALLENDALE



THIS SITE PLAN IS NOT INTENDED AS A LEGAL DESCRIPTION. THE DEPICTION OF THE PROPERTY BOUNDARIES AND BUILDING LOCATIONS IS MEANT TO SERVE ONLY AS A GENERAL GUIDE. THE ACTUAL BOUNDARIES AND BUILDING LOCATIONS WILL DIFFER TO SOME EXTENT FROM THE ABOVE DEPICTION. ASK SALES REPRESENTATIVE FOR DETAILS.



# SITE MAP | THE LANES



## THE LANES AT ALLENDALE



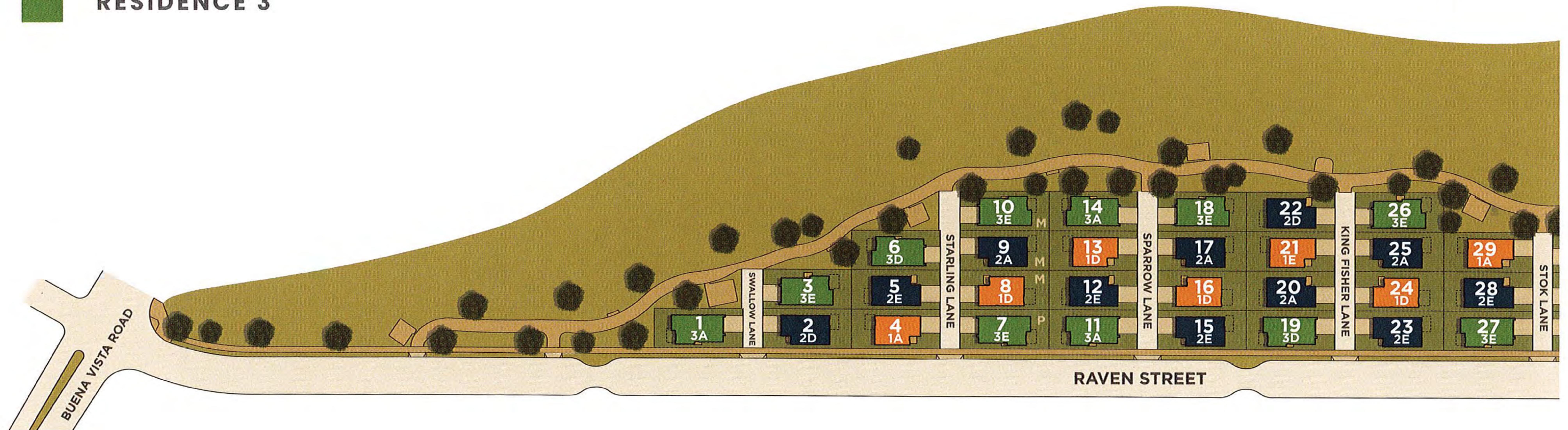
RESIDENCE 1



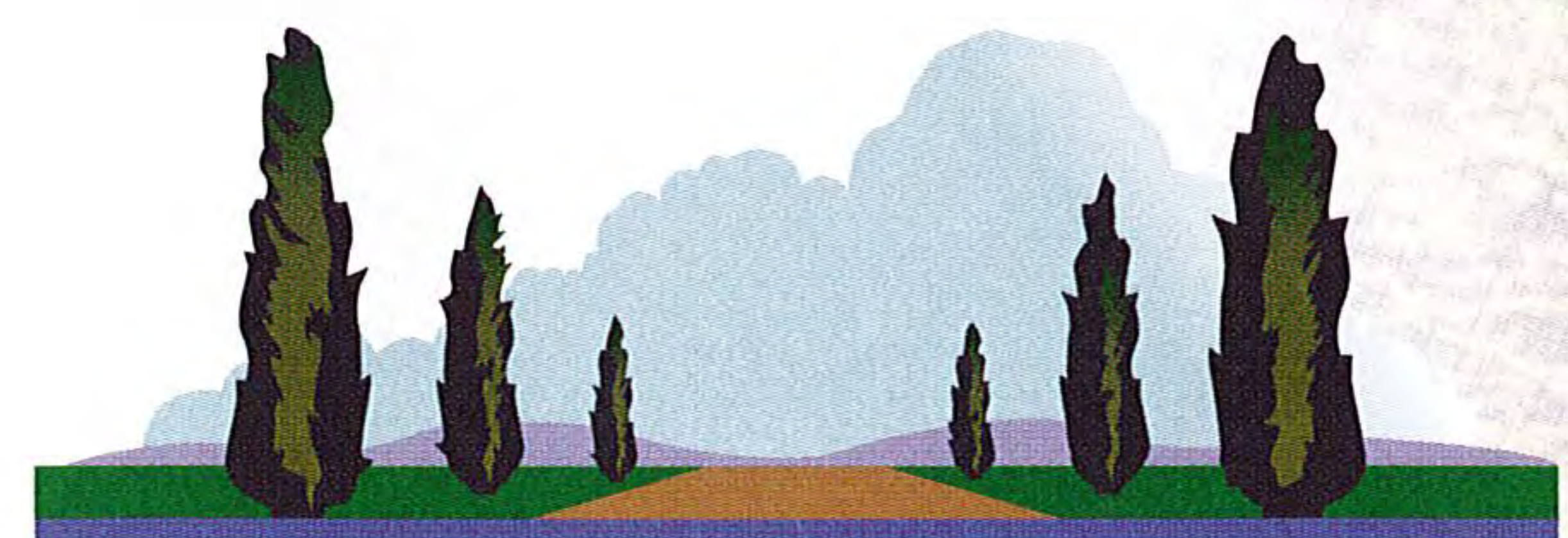
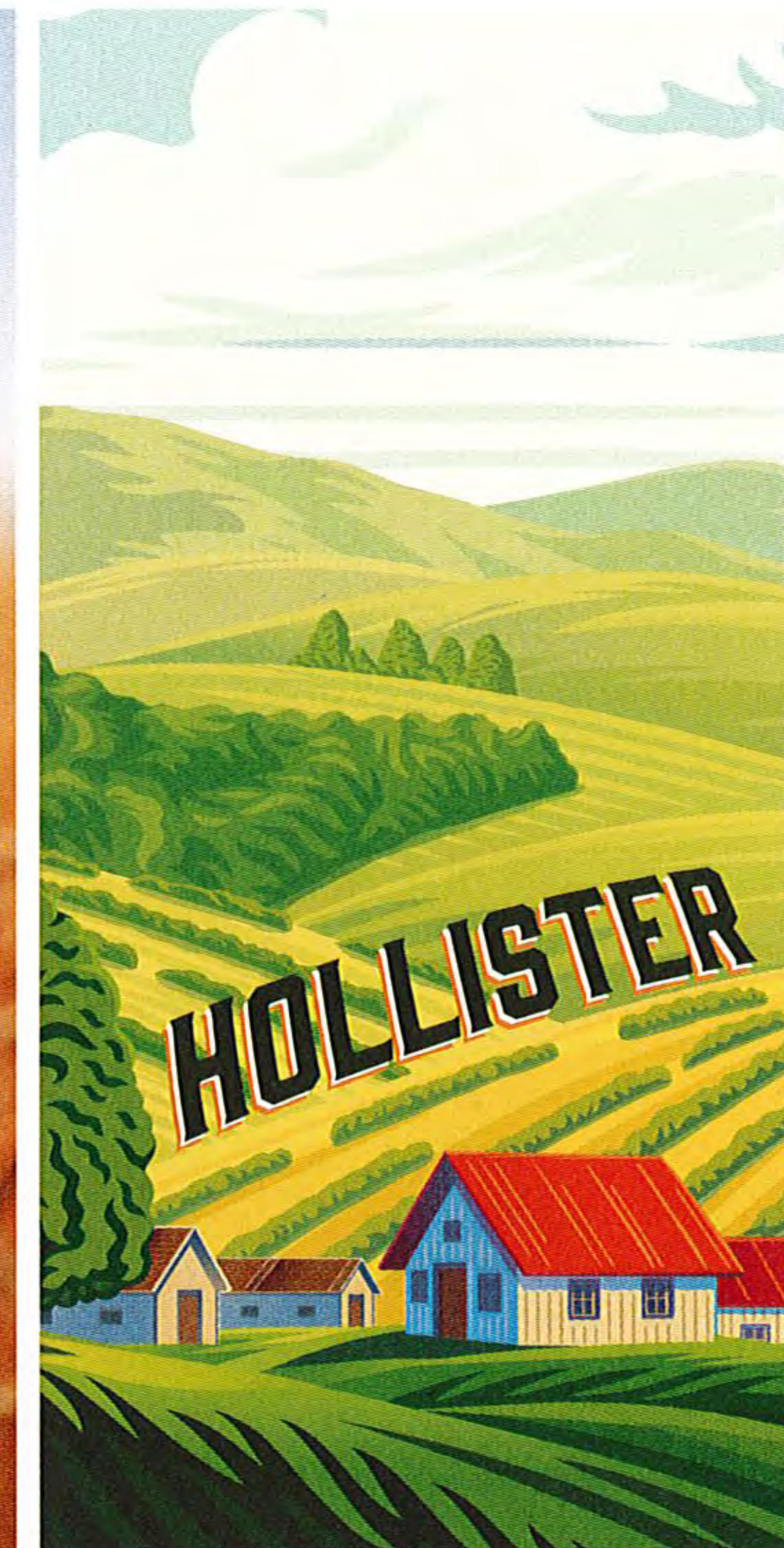
RESIDENCE 2



RESIDENCE 3







**THE LANES**  
AT ALLENDALE

**PRELIMINARY**



**BLOOMING WITH POSSIBILITIES**