

# TWIN OAKS

The architects from William Hezmalhalch Architects, Inc. took inspiration from the buildings of Hollister, and used those forms and shapes to make Twin Oaks Club feel both "of the place" and completely in line with the style of today.

**ARMSBY**  
**± 1,730 SF**

**SINGLE STORY**  
**2 BED + 1 DEN / 2 BATH**  
**2 CAR GARAGE**



CONTACT:

JOHN: (831) 801-4573  
RENEE: (831) 801-1646

BRE: 01250297  
BRE: 00963855

**CALL FOR MORE INFORMATION!**

**KunzTeam.com**

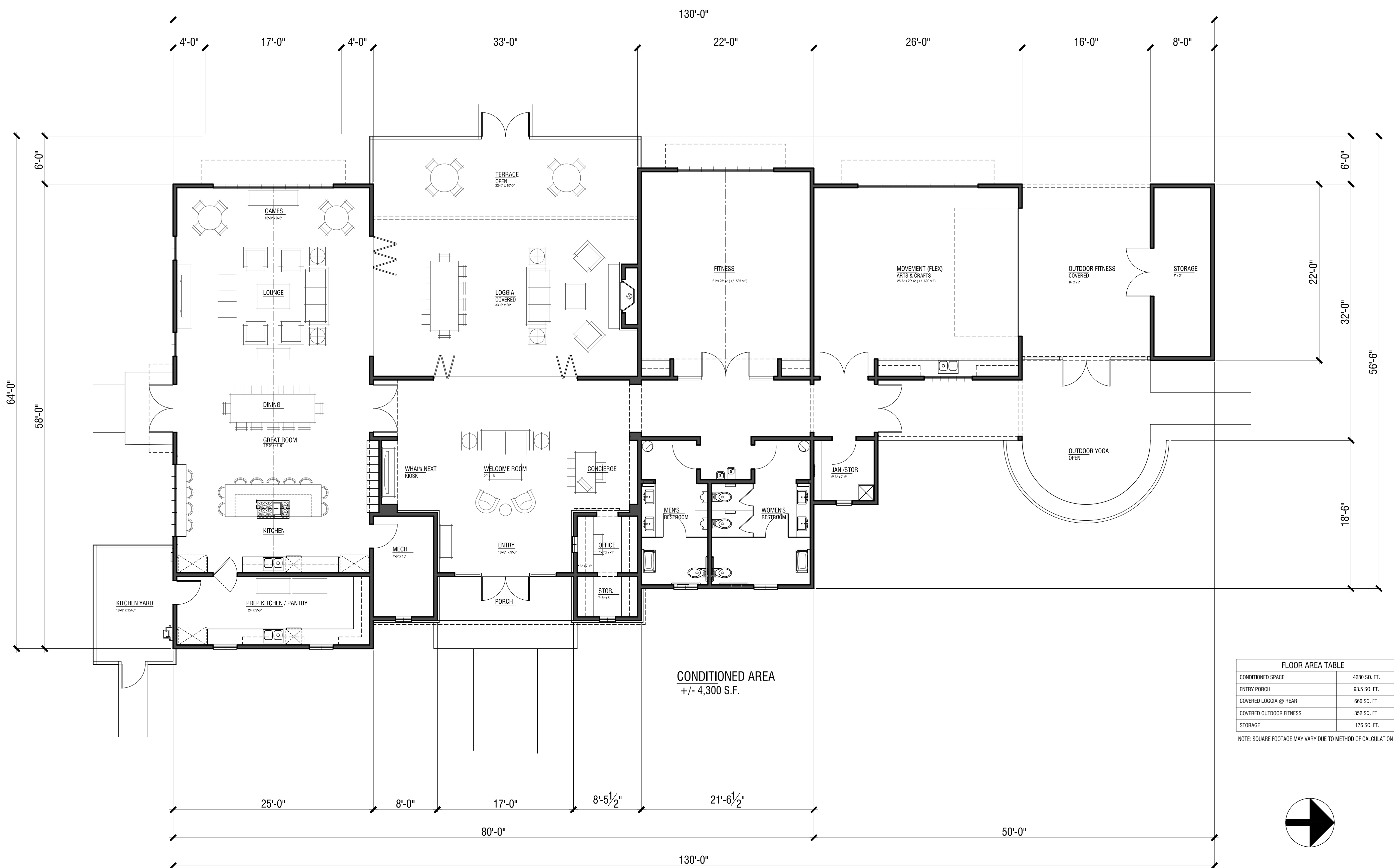






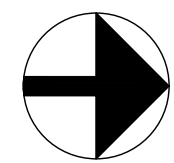
FRONT ELEVATION





FLOOR AREA TABLE	
CONDITIONED SPACE	4280 SQ. FT.
ENTRY PORCH	93.5 SQ. FT.
COVERED LOGGIA @ REAR	660 SQ. FT.
COVERED OUTDOOR FITNESS	352 SQ. FT.
STORAGE	176 SQ. FT.

NOTE: SQUARE FOOTAGE MAY VARY DUE TO METHOD OF CALCULATION

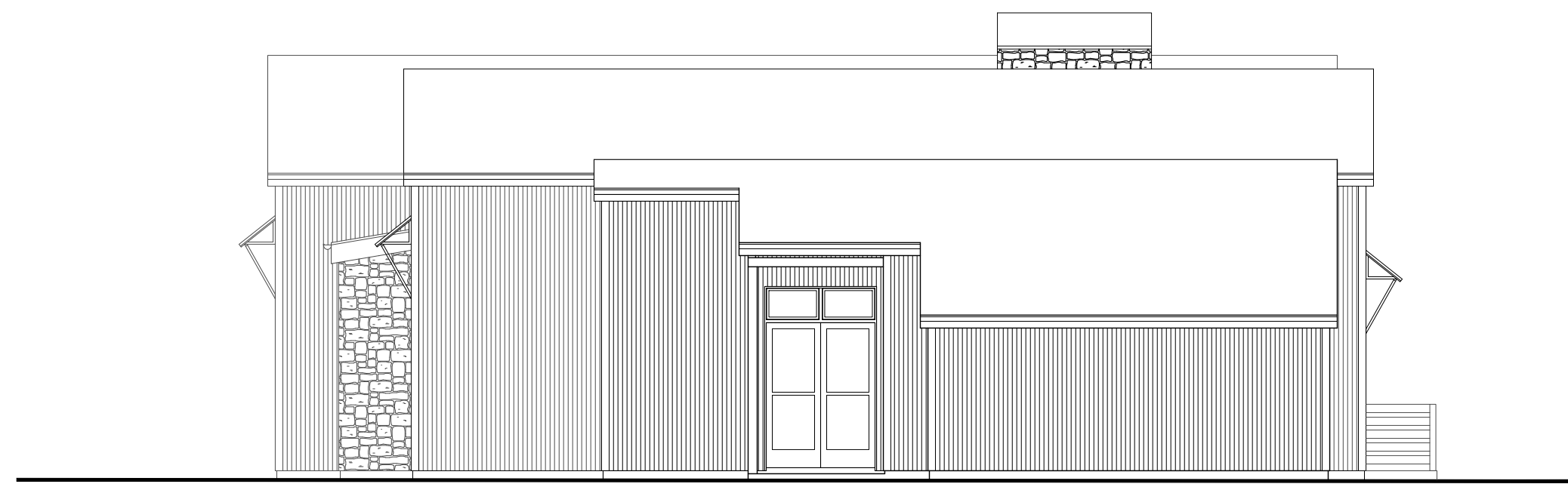


# FLOOR PLAN

## TWIN OAKS CLUBHOUSE

HOLLISTER, CALIFORNIA

A1.1



Right Elevation



Rear Elevation



Left Elevation



Front Elevation

## ELEVATIONS

ANNOTTI RANCH, LLC

TWIN OAKS CLUBHOUSE

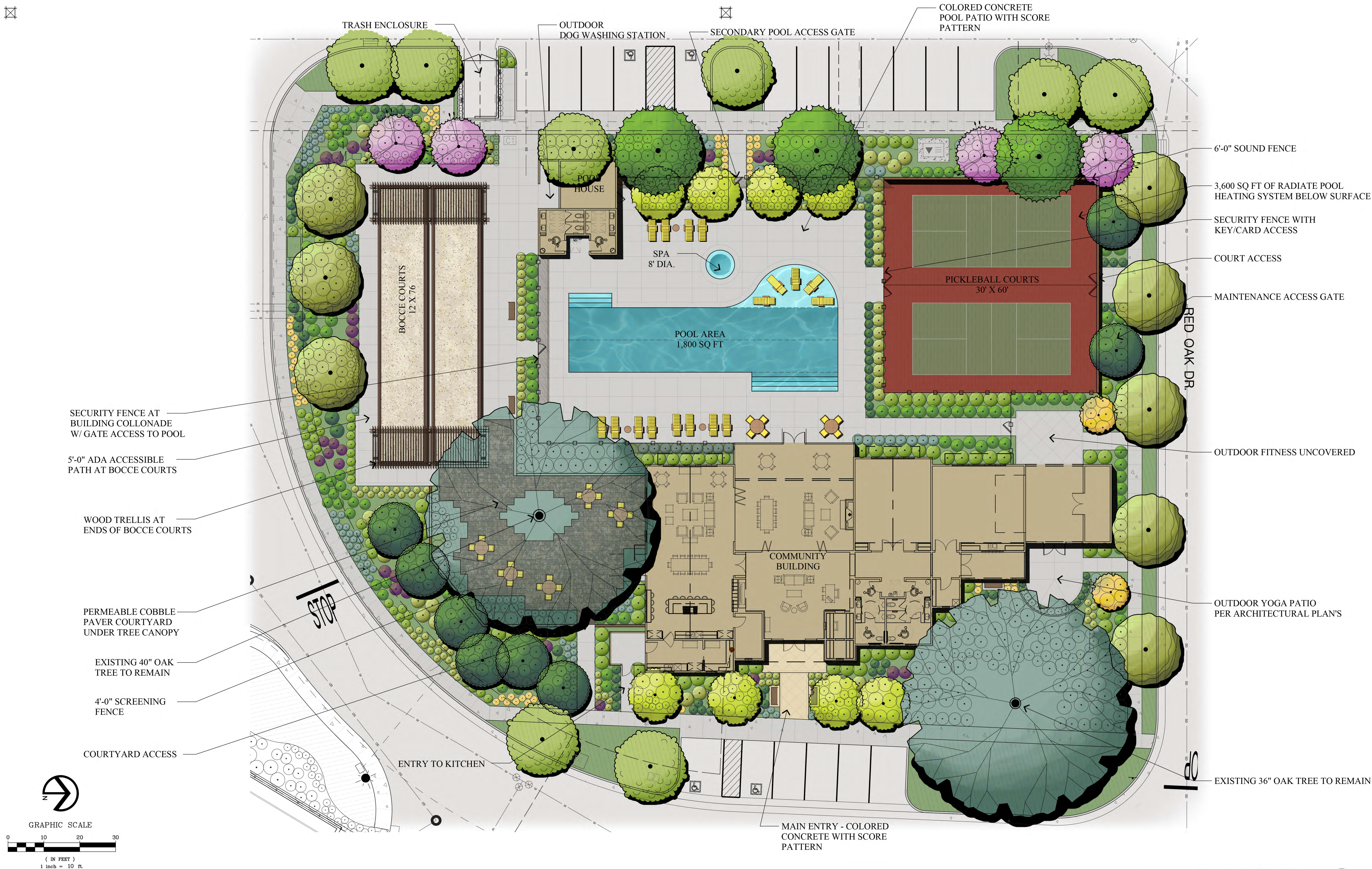
HOLLISTER, CALIFORNIA

A1.2

© 2019 WILLIAM HEZMALHALCH ARCHITECTS, INC. dba WHA. | 2019033 | 08-12-19

ARCHITECTS . PLANNERS . DESIGNERS  
**WHA.**  
ORANGE COUNTY . LOS ANGELES . BAY AREA



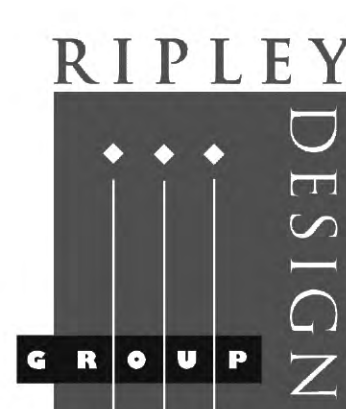


MC CLELLAN DEVELOPMENT



# Recreation Center Conceptual Landscape Plan

**TWIN OAKS**  
Hollister, California



LANDSCAPE ARCHITECTURE  
LAND PLANNING  
1615 BONANZA STREET  
SUITE 314  
WALNUT CREEK, CA 94596  
TEL: 925.938.7377  
FAX: 925.938.7436

August 8, 2019