

TWIN OAKS

The architects from William Hezmalhalch Architects, Inc. took inspiration from the buildings of Hollister, and used those forms and shapes to make Twin Oaks Club feel both "of the place" and completely in line with the style of today.

FAIRVIEW
± 2,011 SF

SINGLE STORY
2-3 BED / 2.5 BATH
2 CAR GARAGE



OPT. BEDROOM 3 AT DEN

CONTACT:

JOHN: (831) 801-4573
RENEE: (831) 801-1646

BRE: 01250297
BRE: 00963855

CALL FOR MORE INFORMATION!

KunzTeam.com

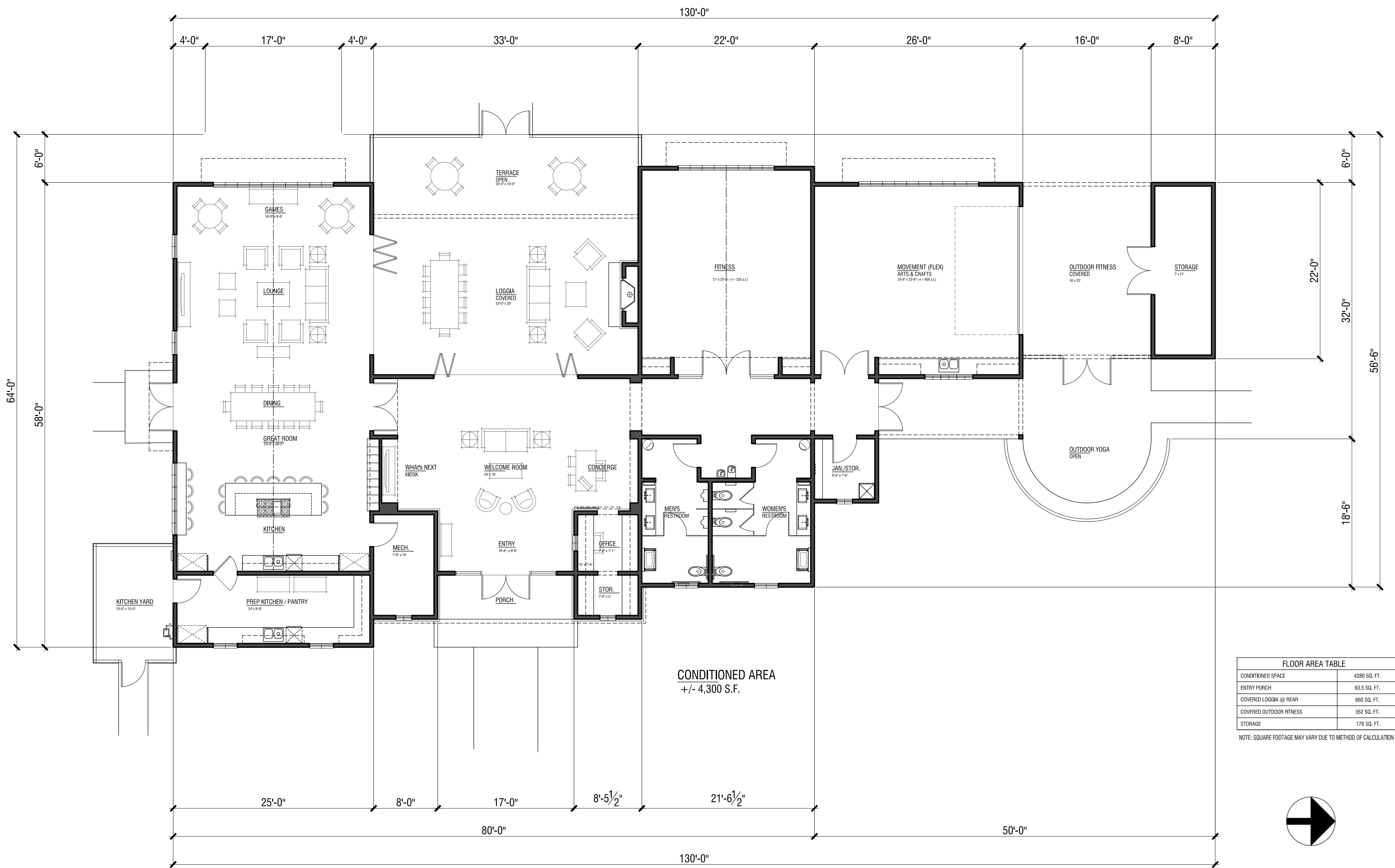




FRONT ELEVATION

TWIN OAKS CLUBHOUSE

HOLLISTER, CALIFORNIA



FLOOR AREA TABLE	
CONDITIONED SPACE	4280 SQ. FT.
ENTRY PORCH	93.5 SQ. FT.
COVERED LOGGIA @ REAR	660 SQ. FT.
COVERED OUTDOOR FITNESS	352 SQ. FT.
STORAGE	176 SQ. FT.

NOTE: SQUARE FOOTAGE MAY VARY DUE TO METHOD OF CALCULATION

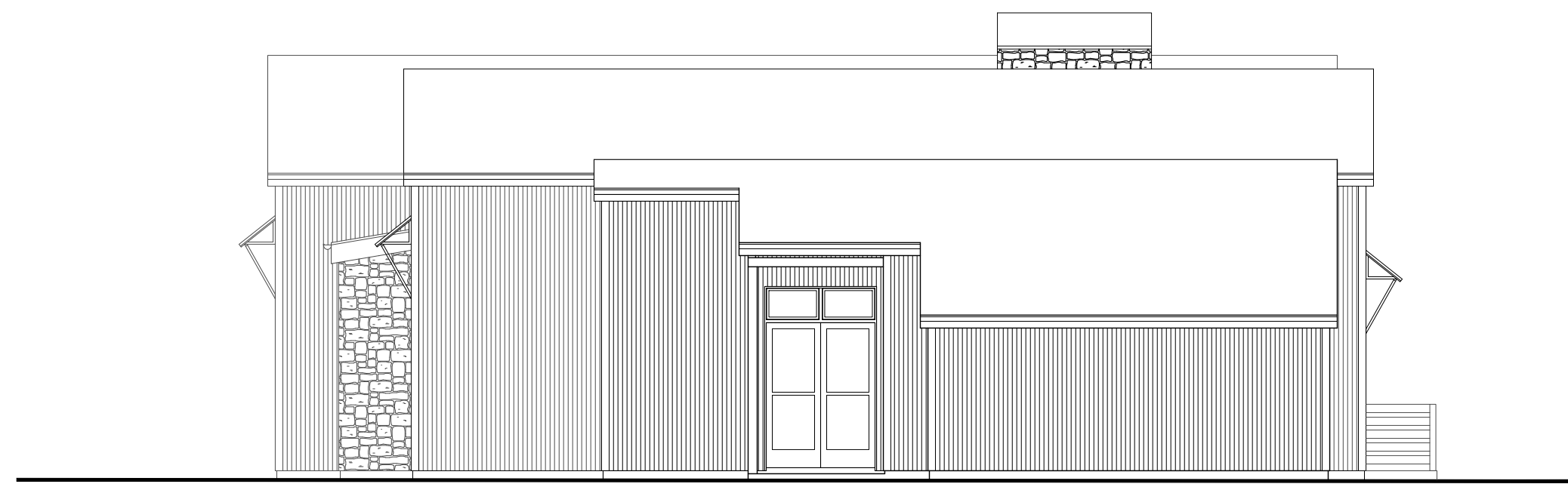
FLOOR PLAN

TWIN OAKS CLUBHOUSE

HOLLISTER, CALIFORNIA

A1.1

ANNOTTI RANCH, LLC



Right Elevation



Rear Elevation



Left Elevation



Front Elevation

ELEVATIONS

ANNOTTI RANCH, LLC

TWIN OAKS CLUBHOUSE

HOLLISTER, CALIFORNIA

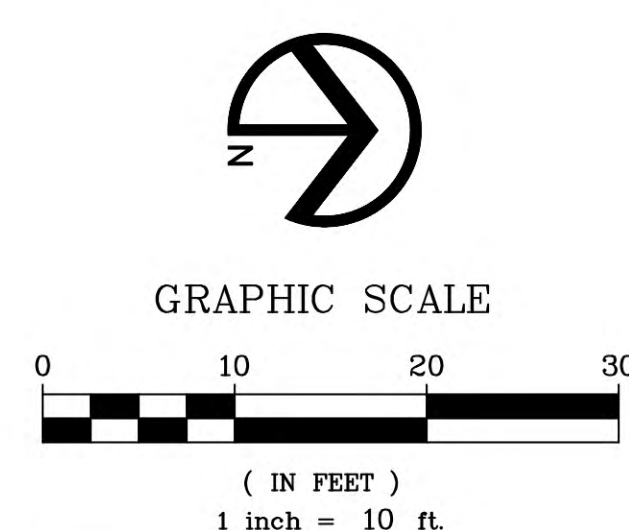
A1.2

© 2019 WILLIAM HEZMALHALCH ARCHITECTS, INC. dba WHA. | 2019033 | 08-12-19

ARCHITECTS . PLANNERS . DESIGNERS

WHA.

ORANGE COUNTY . LOS ANGELES . BAY AREA



Recreation Center Conceptual Landscape Plan

TWIN OAKS
Hollister, California

August 8, 2019