

TWIN OAKS

The architects from William Hezmalhalch Architects, Inc. took inspiration from the buildings of Hollister, and used those forms and shapes to make Twin Oaks Club feel both "of the place" and completely in line with the style of today.

GRIFFIN
± 1,902 SF

SINGLE STORY
2 BED + 1 DEN / 2 BATH
2 CAR GARAGE



CONTACT:

JOHN: (831) 801-4573
RENEE: (831) 801-1646

BRE: 01250297
BRE: 00963855

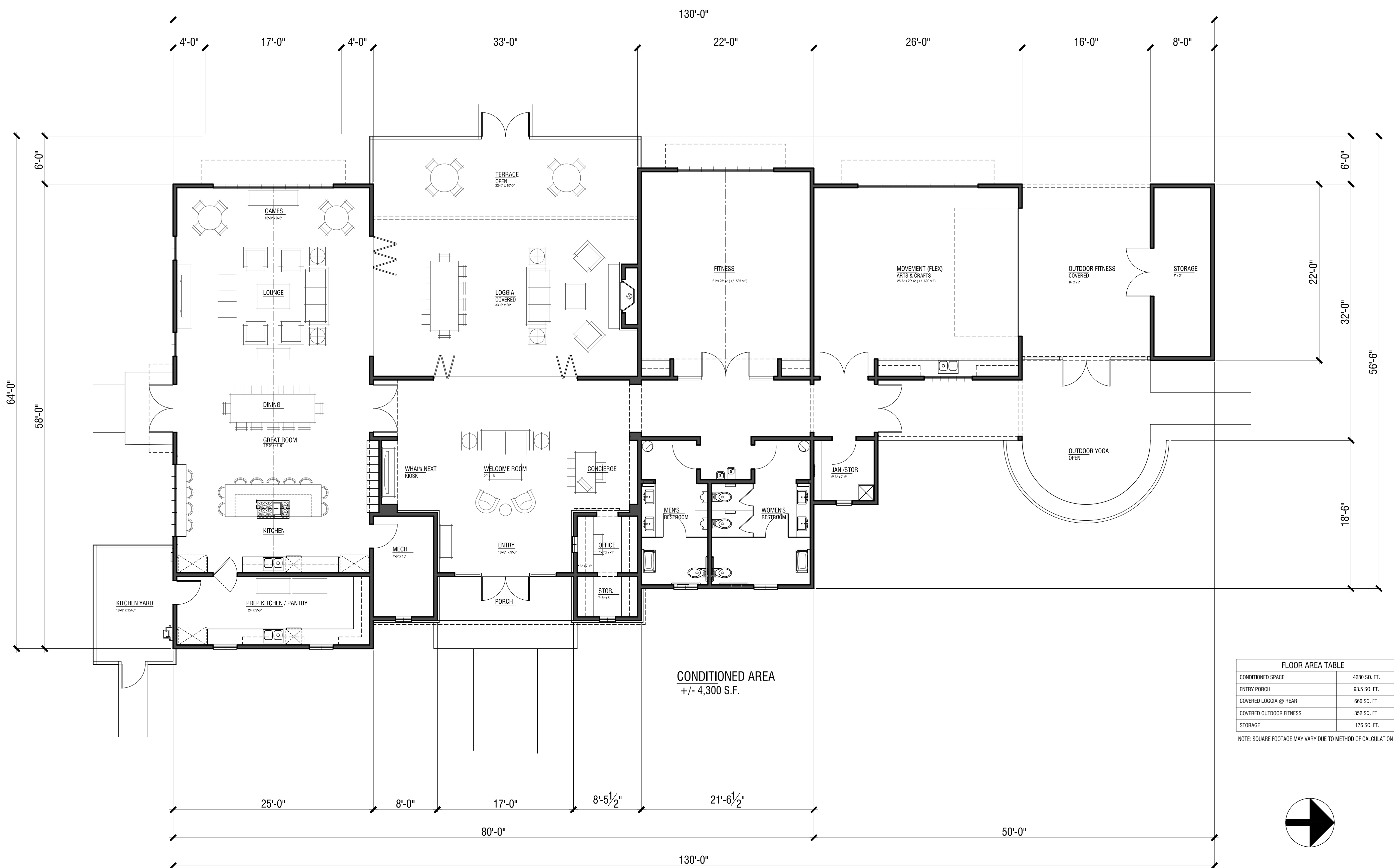
CALL FOR MORE INFORMATION!

KunzTeam.com





FRONT ELEVATION



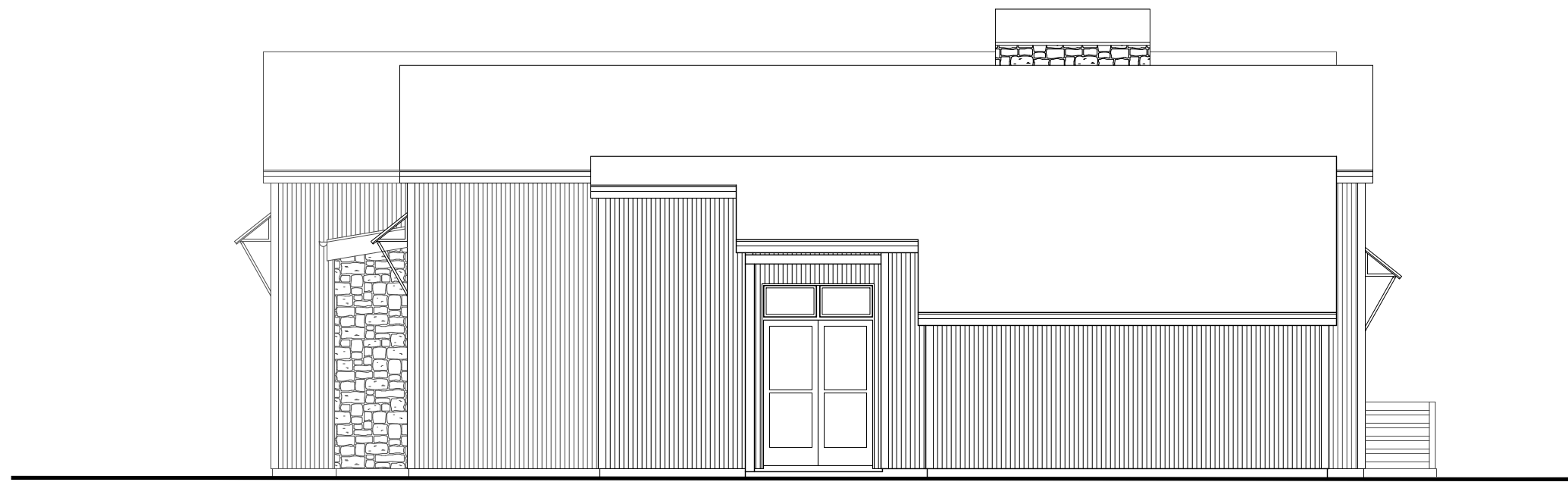
FLOOR PLAN

TWIN OAKS CLUBHOUSE

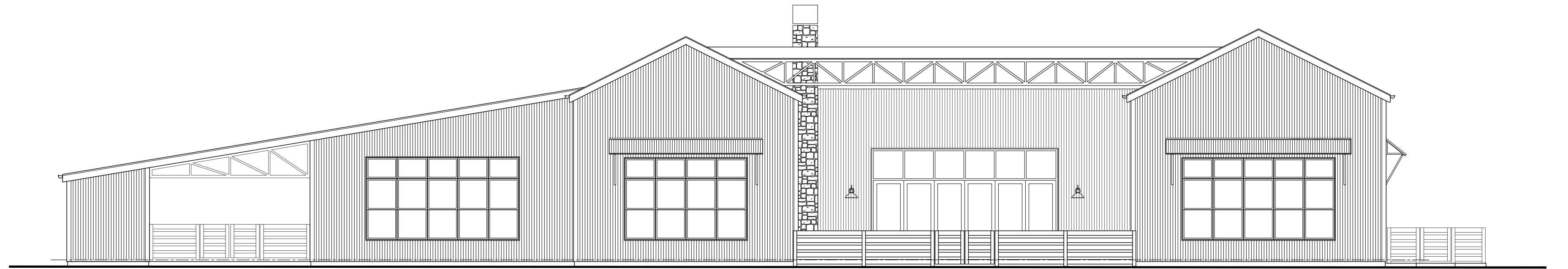
HOLLISTER, CALIFORNIA

A1.1

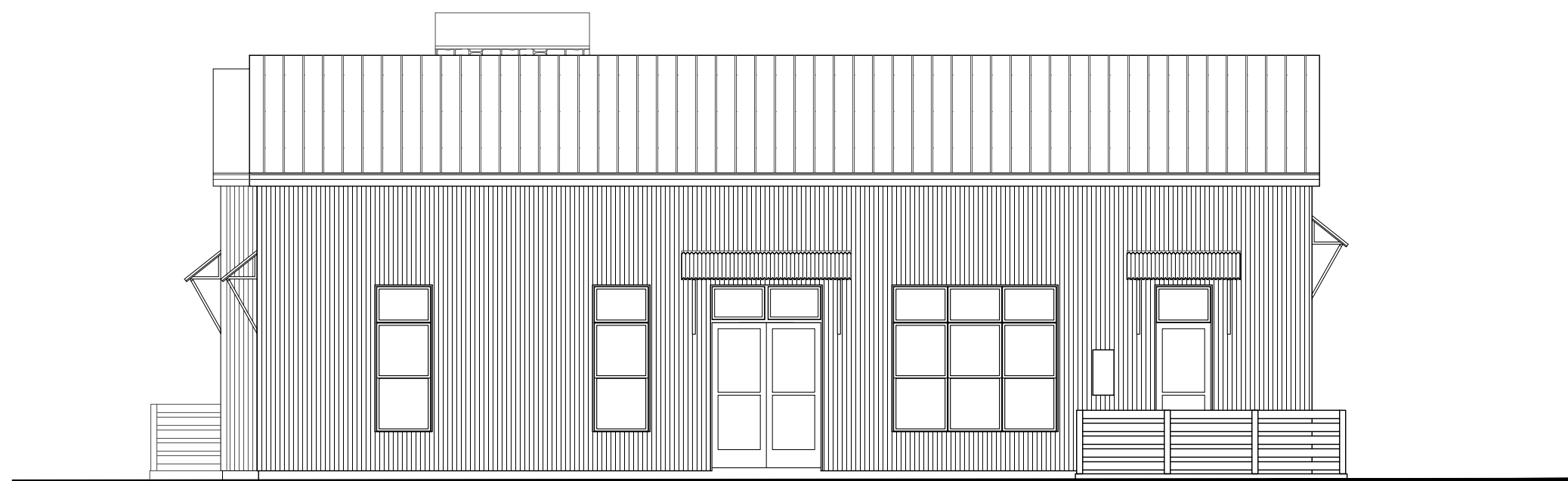
ANNOTTI RANCH, LLC



Right Elevation



Rear Elevation



Left Elevation



Front Elevation

ELEVATIONS

ANNOTTI RANCH, LLC

TWIN OAKS CLUBHOUSE

HOLLISTER, CALIFORNIA

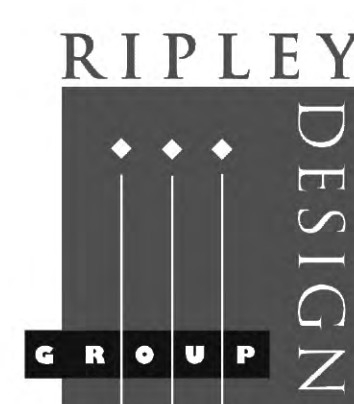
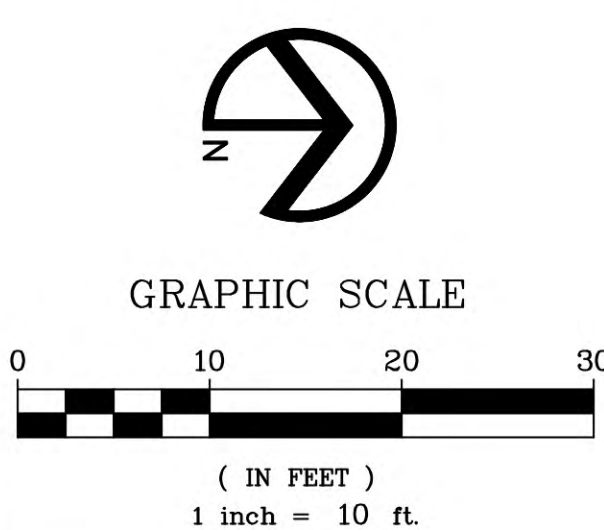
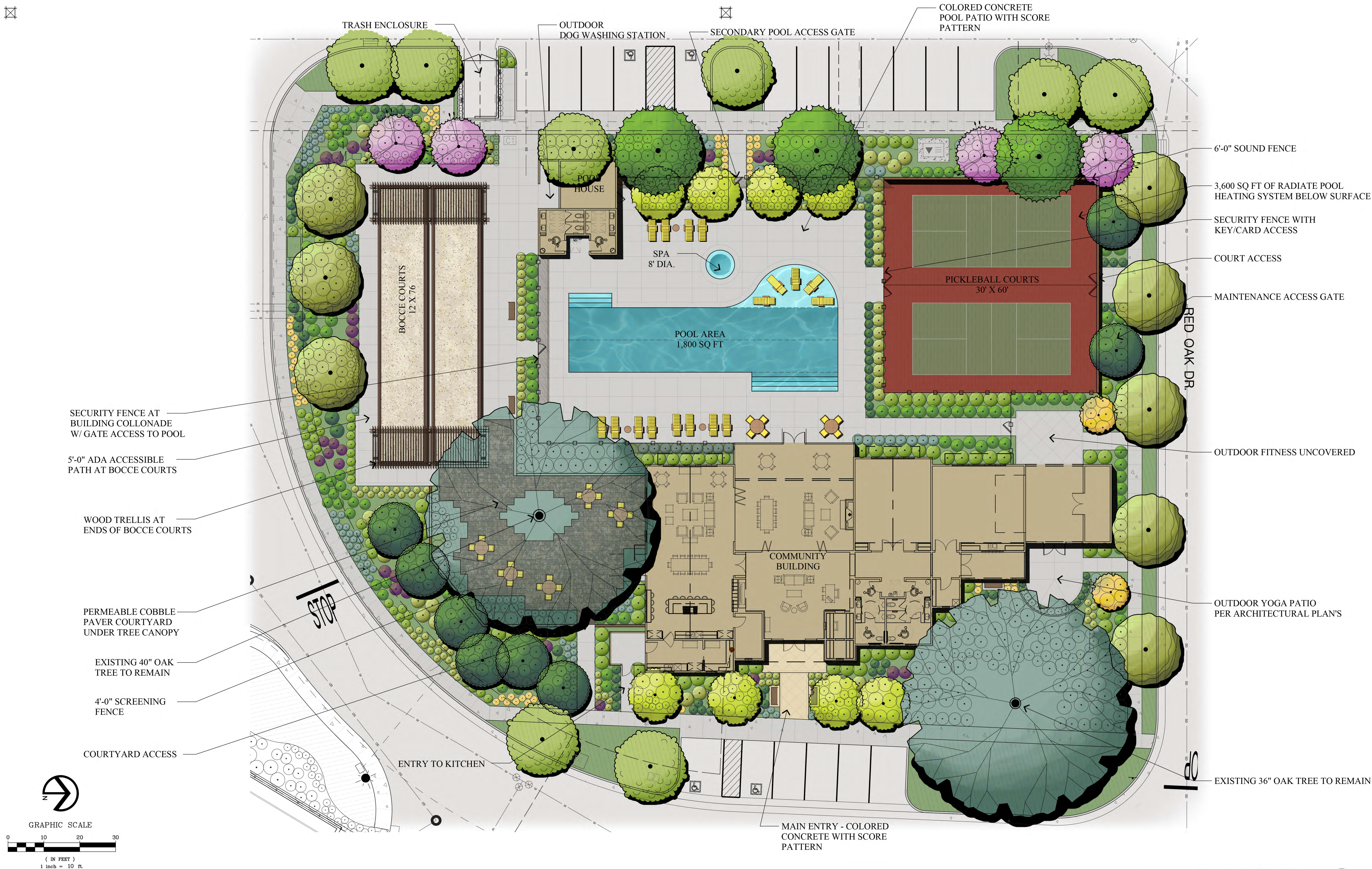
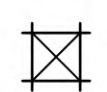
A1.2

© 2019 WILLIAM HEZMALHALCH ARCHITECTS, INC. dba WHA. | 2019033 | 08-12-19

ARCHITECTS . PLANNERS . DESIGNERS

WHA.

ORANGE COUNTY . LOS ANGELES . BAY AREA



LANDSCAPE ARCHITECTURE
LAND PLANNING
1615 BONANZA STREET
SUITE 314
WALNUT CREEK, CA 94596
TEL: 925.938.7377
FAX: 925.938.7436



MC CLELLAN DEVELOPMENT



Recreation Center Conceptual Landscape Plan

TWIN OAKS
Hollister, California

August 8, 2019